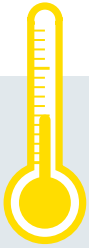
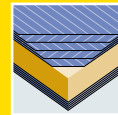


FERRO Passiv/PassivKlima

THE ENERGY SAVER FOR LOWER HEATING COSTS.



New:
upto 42 dB



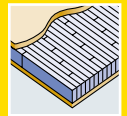
5-ply faces



Exterior grade
MDF faces



Flat steel
stabilizer



Laminated
core



Robust
construction



Passive-house
compliant



TECHNICAL DETAILS

1/8 DOOR FRAME		
1 Framing/timber	Finger-jointed and laminated timber framing.	
8 Flat steel stabilizer	Lock-side patented flat steel stabilizer – thermally separated and sound insulated – to absorb tractive and shearing forces. Flat steel straps are glued and friction-locked with the framework.	
Frame width/Options to shorten/Glass apertures	Thickness of door blank 98 mm	
	Frame width in mm	can be trimmed by
	Top	70 (55*) 10**
	Side	70 (55*) 10**
	Bottom	70 (55*) 10**
Minimum distance for glass apertures on all 4 sides: 180 mm. The frame width corresponds to the shortening dimension. When trimmed by a maximum at the bottom (120 mm), a single rebate (max. 18 mm) and/or fitting of drop down seal is possible.		
2 INNER LAYER		
Construction	Quality-proven with long-term experience - Sandwich construction of laminated core (spruce) and HCFC-free and environmentally compatible PU hard foam - PassivKlima with ecological solid timber insulation - Well surface stability through vertically aligned annual rings	
Bonding	Free of formaldehyde	
3-7 COVER BOARD		
Bonding	AW bonding according to DIN 68705 T2 temperature resistant up to 130° - 5 layers (noble veneer, longitudinal) - 3 layers (cross grained veneer) = can be veneered individually Full-surface bonding with the overall construction	
EXTERNAL DOOR BLANK		
Model/finish	Cut and sanded	
Processing information	With FERRO Passive external door blanks you can manufacture doors systems with an U-value, lower than 0.8 W/m²K). Please contact us and we will provide you with the relevant documents.	

* only for PassivKlima ** with a max. rebate of 30 mm

EXAMINATIONS AND TESTS

FERRO PASSIV/PASSIVKLIMA	Passiv	PassivKlima
LENGTH IN MM	upto 2,470	upto 2,470
WIDTH IN MM	upto 1,150	upto 1,150
THICKNESS IN MM	98 (96*)	98 (96*)
DIFFERENT CLIMATE TESTING		
DIN EN 1121 : 2000-09	test climate „c“	test climate „c“
DIN EN 1121 : 2000-09	test climate „d“	test climate „d“
DIN EN 1121 : 2000-09	test climate „e“	test climate „e“
TOLERANCE CLASSES (by using three hinges)		
DIN EN 12219 : 2000-6	3	3
WÄRMEDURCHGANGSKOEFFIZIENT		
U-value (W/m²K) according to EnEV	0.54	0.69
SOUND INSULATION		
DIN EN ISO 717-1 R _w ,(dB)	30-42**	32-37**
BURGLAR RESISTANT		
DIN ENV 1627 : 1999-04	RC2/RC3	RC2/RC3
WEIGHT: 2,240 X 1,050 MM KG/PIECE	70	80

* cross veneered ** for version Akustik

PRODUCT RANGE

FERRO PASSIV/PASSIVKLIMA	Passiv	PassivKlima
Length in mm	upto 2,470	upto 2,470
Width in mm	upto 1,150	upto 1,150
Thickness in mm	98	98
Mahogany	■	■
Okoume	■	■
Meranti	■	■
Oak	■	■
Pine	■	■
Spruce	■	■
Larch	■	■
Paint-grade	■	■
MDF exterior	■	■
HPL laminate	■	■
Cross grained PV	■	■

■ to guarantee the specified insulation values, FERRO Passiv-door blanks are manufactured according to individual specifications

All veneer surfaces = cut veneer or fine-line PV = peeled veneer face

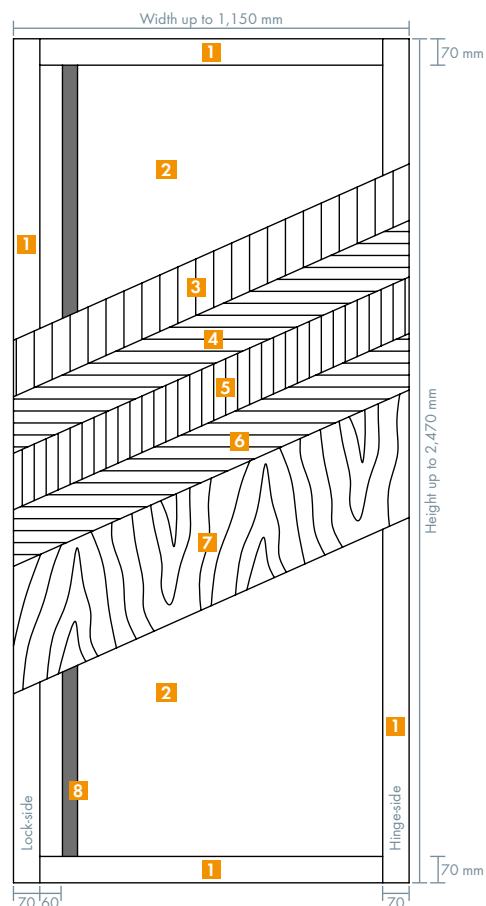
Further dimensions, sizes and facings on request.

Any Questions? Info-Hotline: +49 8026 92538-11 www.moralt-ag.com

Moralt AG, Obere Tiefenbachstraße 1, 83734 Hausham, Phone: +49 8026 92538-0, Fax: +49 8026 92538-40, E-Mail: info@moralt-ag.de

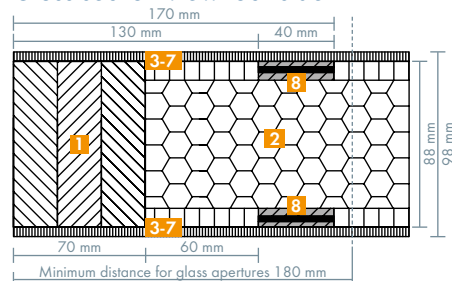
This information is according to the present state of knowledge and does not represent an assurance of properties. Existing laws and regulations are to be followed by the recipient of our products at his own responsibility. All information refers solely to products by Moralt AG.

FERRO Passiv/PassivKlima

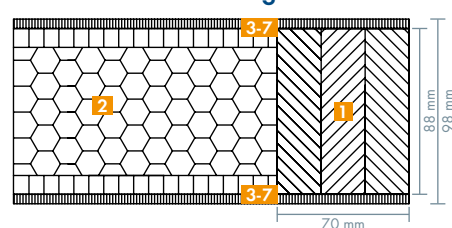


- 1** Framing/timber
- 2** Sandwich system with high heat insulation
- 3-7** Cover board
- 8** Flat steel stabilizer

Cross-section view lock-side



Cross-section view hinge side



Despatch of single cargo

Direct delivery of a single pieces to the manufacturer is possible.

CNC-processing service

All types may be delivered CNC processed.

Profi-Net timber distributor

