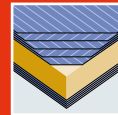


FERRO FireSafe KlimaSoft/FireSafe Akustik

THE FIRE RESISTANT LIFE-SAVER.



New:
upto 47 dB



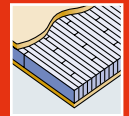
5-ply faces



Exterior grade
MDF faces



Flat steel
stabilizer



Laminated
core



Robust
construction



Fire
protection



TECHNICAL DETAILS

1/8 DOOR FRAME			
1 Framing/timber	Finger-jointed and laminated timber framing.		
8 Flat steel stabilizer	Patented flat steel stabilizer – thermally separated and sound insulated – to absorb tractive and shearing forces. Flat steel straps are glued and friction-locked with the framework.		
Frame width/Options to shorten/Glass apertures	Thickness of door blank 68 mm - 98 mm		
	Frame width in mm	can be trimmed by	
	Top	155	110*
	Side	lock-side 70/hinge-side 155	25*/110*
	Bottom	155	120*
Minimum distance for glass apertures on all 4 sides: 180 mm. The frame width corresponds to the shortening dimension. When trimmed by a maximum (120 mm) at the bottom side, a single rebate (max. 18 mm) and/or fitting of drop down seal is possible.			
2 INNER LAYER			
Construction	Quality-proven with long-term experience – Sandwich construction of laminated core (spruce) and ecological solid timber insulation, model FireSafe Akustik including sound insulation – Well surface stability through vertically aligned annual rings		
Bonding	Free of formaldehyde		
3-7 COVER BOARD			
Bonding	AW bonding according to DIN 68705 T2 temperature resistant up to 130° – 5 layers (noble veneer, longitudinal) – 3 layers (cross grained veneer) = can be veneered individually Full-surface bonding with the overall construction		
EXTERNAL DOOR BLANK			
Model/finish	Cut and sanded		
Processing information	With FERRO FireSafe external door blanks you can easily manufacture fire resistant external doors. Please contact us and we will provide you with the relevant documents. Please be aware of the nationally stipulated usability certificates. For further information, please view: brandschutz@moralt-ag.de		

* with a max. rebate of 30 mm

EXAMINATIONS AND TESTS

FERRO FIRESAFE KLIMASOFT/FIRESAFE AKUSTIK	FireSafe KlimaSoft	FireSafe Akustik
LENGTH IN MM	upto 2,470	upto 2,470
WIDTH IN MM	upto 1,150	upto 1,150
THICKNESS IN MM	68-98	68-98
DIFFERENT CLIMATE TESTING		
DIN EN 1121 : 2000-09	test climate „c“	test climate „c“
DIN EN 1121 : 2000-09	test climate „d“	test climate „d“
DIN EN 1121 : 2000-09	test climate „e“	test climate „e“
TOLERANCE CLASSES (by using three hinges)		
DIN EN 12219 : 2000-6	3	3
THERMAL TRANSFER COEFFICIENT		
U-value (W/m²K) according to EnEV	1.02 - 0.8	1.02 - 0.9
SOUND INSULATION		
DIN EN ISO 717-1 R _w (dB)	31-37	42-47*
FIRE RESISTANCE		
DIN EN 13501-2	EI ₃₀ **	EI ₃₀ **
BURGLAR-RESISTANCE		
DIN ENV 1627 : 1999-04	RC2/RC3	RC2/RC3
WEIGHT: 2,240 X 1,050 MM KG/PIECE	70-98	88-121

* Element thickness 88mm ** depends on nationally stipulated usability certificates

PRODUCT RANGE

FERRO FIRESAFE KLIMASOFT/FIRESAFE AKUSTIK 68 MM - 98 MM							
Length in mm	2,110 (1,880*)		2,240 (2,010*)			2,470 (2,240*)	
Width in mm	950	1,050	950	1,050	1,150	1,050	1,150
Mahogany	■	■	■	■	■	■	■
Okoume	■	■	■	■	■	■	■
Meranti	▲	▲	▲	▲	▲	■	■
Oak	▲	▲	▲	▲	▲	■	■
Pine	▲	▲	▲	▲	▲	■	■
Spruce	▲	▲	▲	▲	▲	■	■
Larch	▲	▲	▲	▲	▲	■	■
Paint-grade	▲	▲	▲	▲	▲	■	■
MDF exterior	▲	▲	▲	▲	▲	■	■
FERRO FIRESAFE KLIMASOFT/FIRESAFE AKUSTIK 66 MM - 96 MM							
Length in mm	2,110 (1,880*)		2,240 (2,010*)			2,470 (2,240*)	
Width in mm	950	1,050	950	1,050	1,150	1,050	1,150
Cross grained PV	■	■	■	■	■	■	■

* minimal dimension ■ order-based production ▲ available in 5 working days PF = peeled veneer face

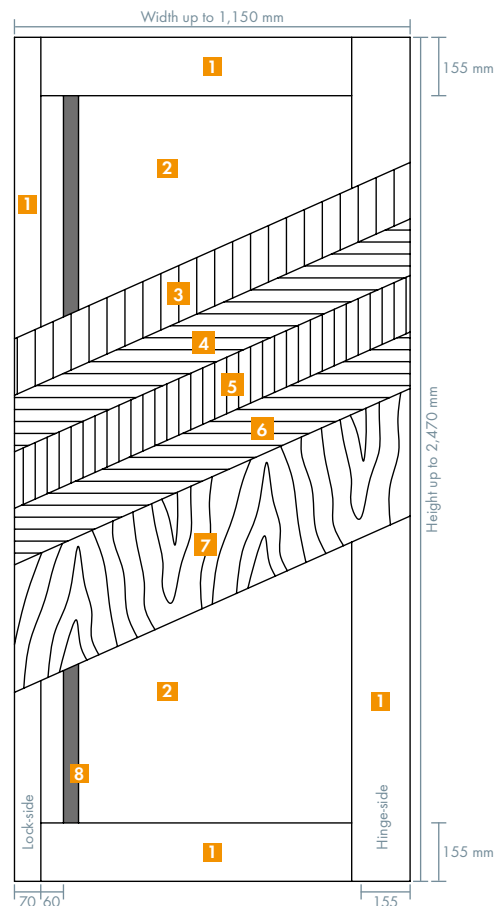
All veneer surfaces = sliced veneer or fine-line

Any Questions? Info-Hotline: +49 8026 92538-11 www.moralt-ag.com

Moralt AG, Obere Tiefenbachstraße 1, 83734 Hausham, Phone: +49 8026 92538-0, Fax: +49 8026 92538-40, E-mail: info@moralt-ag.de

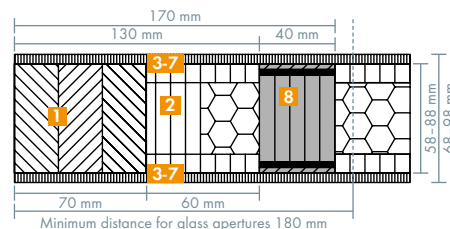
This information is according to the present state of knowledge and does not represent an assurance of properties. Existing laws and regulations are to be followed by the recipient of our products at his own responsibility. All information refers solely to products by Moralt AG.

FERRO FireSafe KlimaSoft/ FireSafe Akustik

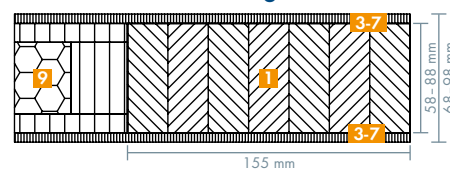


- 1 Solid timber frame
- 2 Sandwich system
- 3-7 Cover board
- 8 Flat steel stabilizer
- 9 PUR hard foam

Cross-section view lock-side



Cross-section view hinge side



CNC-processing service

CNC processing on request.

Despatch of single cargo

Direct delivery of a single pieces to the manufacturer is possible.

Profi-Net timber distributor

