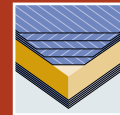


## FERRO Akustik

# THE NOISE ABSORBER FOR HEAVENLY SILENCE.



New:  
upto 47 dB



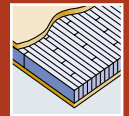
5-ply faces



Exterior grade  
MDF faces



Flat steel  
stabilizer



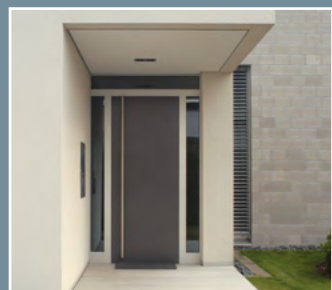
Laminated  
core



Robust  
construction



Acoustic  
insulation



# TECHNICAL DETAILS

<b>1/8 DOOR FRAME</b>			
<b>1 Framing/timber</b>	Finger-jointed and laminated timber framing.		
<b>8 Flat steel stabilizer</b>	Lock-side patented flat steel stabilizer – thermally separated and sound insulated – to absorb tractive and shearing forces. Flat iron straps are glued and friction-locked with the framework.		
<b>Frame width/Options to shorten/Glass apertures</b>	Thickness of door blank 68 - 98 mm		
	Frame width in mm	can be trimmed by	
	Top	155	110*
	Side	lock-side 70/hinge-side 155	lock-side 25*/hinge-side 110*
	Bottom	155	120*
Minimum distance for glass apertures on all 4 sides: 180 mm. The entrance width corresponds to the shortening dimension. When cut to minimum length at the bottom (120 mm), a single rebate (max. 18 mm) and/or fitting of drop down seal is possible.			
<b>2 INNER LAYER</b>			
<b>Construction</b>	Quality-proven with long-term experience – Sandwich construction of laminated core (spruce) including sound insulation – Well surface stability through vertically aligned annual rings		
<b>Bonding</b>	Free of formaldehyde		
<b>3-7 COVER BOARD</b>			
<b>Bonding</b>	AW bonding according to DIN 68705 T2 temperature resistant up to 130° – 5 layers (noble veneer, longitudinal) – 3 layers (cross grained veneer) = can be veneered individually Full-surface bonding with the overall construction		
<b>EXTERNAL DOOR BLANK</b>			
<b>Model/finish</b>	Cut and sanded		
<b>Processing information</b>	The sound insulation can be processed with woodworking machinery.		

\* with a max. rebate of 30 mm

## EXAMINATIONS AND TESTS

<b>LENGTH IN MM</b>	upto 2,470			
<b>WIDTH IN MM</b>	upto 1,150			
<b>THICKNESS IN MM</b>	68	78	88	98
<b>DIFFERENT CLIMATE TESTING</b>				
DIN EN 1121 : 2000-09	test climate „c“			
DIN EN 1121 : 2000-09	test climate „d“			
DIN EN 1121 : 2000-09	test climate „e“			
<b>TOLERANCE CLASSES (by using three hinges)</b>				
DIN EN 12219 : 2000-6	3			
<b>THERMAL TRANSFER COEFFICIENT</b>				
U-value (W/m²K) according to EnEV	1,2	1,0	0,85	0,78
<b>SOUND INSULATION</b>				
DIN EN ISO 717-1 R <sub>w</sub> ,[dB]	42-44	42-44	42-47	42-44
<b>BURGLAR-RESISTANCE</b>				
DIN ENV 1627 : 1999-04	RC2/RC3			
<b>WEIGHT: 2,240 X 1,050 MM KG/PIECE</b>	94	98	104	108

**PfB** Prüfzentrum für Bauelemente  
Dipl.-Ing. (FH) Rüdiger Müller  
Lehrstrasse 21 • D-82011 Stephansteden (bei Rosenheim)

## PRODUCT RANGE

FERRO AKUSTIK 68 MM - 98 MM							
Length in mm	2,110 (1,880*)		2,240 (2,010*)			2,470 (2,240*)	
Width in mm	950	1,050	950	1,050	1,150	1,050	1,150
Mahogany	■	■	■	■	■	■	■
Okoume	■	■	■	■	■	■	■
Meranti	■	■	■	■	■	■	■
Oak	■	■	■	■	■	■	■
Pine	■	■	■	■	■	■	■
Spruce	■	■	■	■	■	■	■
Larch	■	■	■	■	■	■	■
Paint-grade	■	■	■	■	■	■	■
MDF exterior	■	■	■	■	■	■	■
FERRO AKUSTIK 66 MM - 96 MM							
Length in mm	2,110 (1,880*)		2,240 (2,010*)			2,470 (2,240*)	
Width in mm	950	1,050	950	1,050	1,150	1,050	1,150
Cross grained PV	■	■	■	■	■	■	■

\* minimal dimension ■ order-based production PV = peeled veneer face

Alle Furnieroberflächen = Messerfurnier oder Fineline

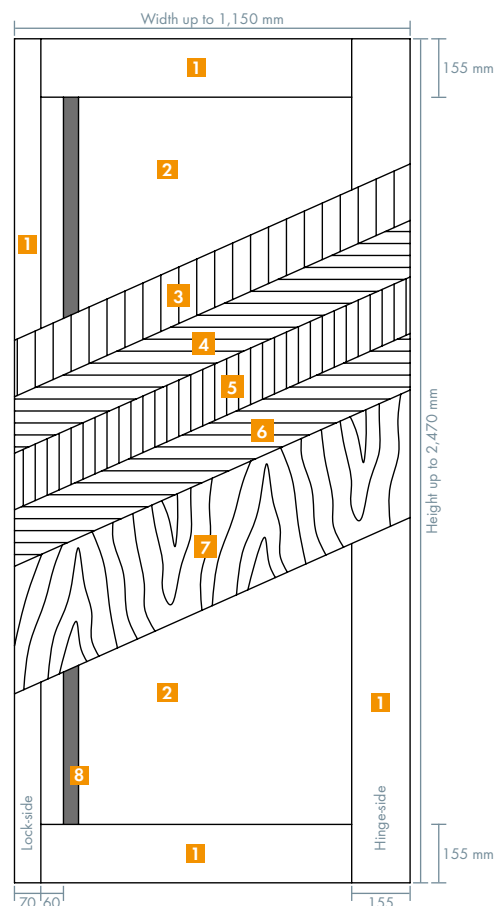
Further dimensions, sizes and facings on request.



**Any Questions?** Info-Hotline: +49 8026 92538-11 [www.moralt-ag.com](http://www.moralt-ag.com)  
Moralt AG, Obere Tiefenbachstraße 1, 83734 Hausham, Phone: +49 8026 92538-0, Fax: +49 8026 92538-40,  
E-Mail: [info@moralt-ag.de](mailto:info@moralt-ag.de)

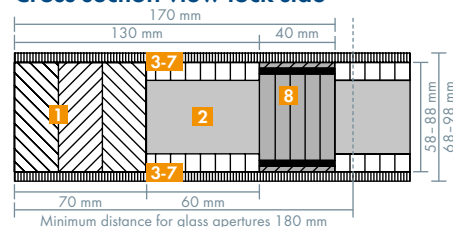
This information is according to the present state of knowledge and does not represent an assurance of properties. Existing laws and regulations are to be followed by the recipient of our products at his own responsibility. All information refers solely to products by Moralt AG.

## FERRO Akustik

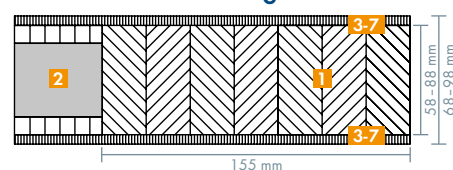


- 1** Framing/timber
- 2** Sandwich system with high heat insulation
- 3-7** Cover board
- 8** Flat steel stabilizer

### Cross-section view lock-side



### Cross-section view hinge-side



### Despatch of single cargo

Direct delivery of a single pieces to the manufacturer is possible.

### CNC-processing service

All types may be delivered CNC processed.

Profi-Net timber distributor